

We would love to invite you to our

# Virtual SEND Coffee Morning



**Thursday 1<sup>st</sup> October  
9:15am - 10:15am**

Via Google Meet: [LINK](#)

Grab a cuppa and join us to hear about the provision for children with Special Education Needs (SEND) at Jessop Primary School.

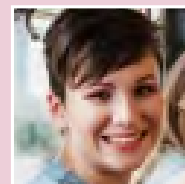
Our aim is to have short presentations from our Inclusion team and external professionals who work at Jessop.

There will also be a Q&A at the end of the session. If you have any personal or specific questions about your child, please email the SENDco Amanda Burrows

[aburrows@jessop.lambeth.sch.uk](mailto:aburrows@jessop.lambeth.sch.uk)



**Amanda Burrows**  
SENDco



**Dr. Isabella McDonald**  
Education Psychologist



**Antonia Jenkins**  
Inclusion Coordinator



**Stephanie Serbis**  
Family link worker



**Jessop Primary  
& Children's Centre**



**Keegan Hall-Browne**  
Teacher of the deaf



**Natasha Simone**  
Speech & Language  
Therapist



**Anita Janjua**  
Specific Learning Difficulties  
teacher (Dyslexia)



**Noel Gardner**  
Lambeth Autism  
Advisory Service

**Thank you for all your support and we look forward to seeing you on-line!**